



License No. 800025015
 FL License # CMTL-0003
 CLIA No. 10D1094068

Certificate of Analysis

Compliance Test

BIOTA BIOSCIENCES
 1601 5th Ave.
 Seattle, WA 98101

Batch # 20SM3727
 Batch Date: 2021-01-05
 Extracted From: Hemp

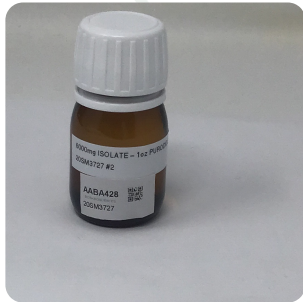
Test Reg State: Oregon

Production Facility: BIOTA Biosciences
 Production Date: 2021-01-05

Order # BIO210224-010037
 Order Date: 2021-02-24
 Sample # AABA428

Sampling Date: 2021-02-25
 Lab Batch Date: 2021-02-25
 Completion Date: 2021-03-02

Initial Gross Weight: 70.728 g
 Density: 0.979 g/ml



Potency
 Tested

Product Image

Potency - 11

Specimen Weight: 100.570 mg

Analyte	Dilution (1:n)	LOD (%)	LOQ (%)	Result (mg/ml)	(%)
CBD	10.000	0.000054	0.001	209.898	21.440
CBDV	10.000	0.000065	0.001	0.972	0.099
CBC	10.000	0.000018	0.001		<LOQ
THCV	10.000	0.000007	0.001		<LOQ
Delta-9 THC	10.000	0.000013	0.001		<LOQ
Delta-8 THC	10.000	0.000026	0.001		<LOQ
CBN	10.000	0.000014	0.001		<LOQ
CBGA	10.000	0.000008	0.001		<LOQ
CBG	10.000	0.000248	0.001		<LOQ
CBDA	10.000	0.000001	0.001		<LOQ
THCA-A	10.000	0.000032	0.001		<LOQ

Tested
 (HPLC/LCMS)

Potency Summary

Total THC None Detected	Total CBD 21.440%
Total CBG None Detected	Total CBN None Detected
Other Cannabinoids 0.099%	Total Cannabinoids 21.539%

Xueli Gao Lab Toxicologist
 Ph.D., DABT

Aixia Sun Lab Director/Principal Scientist
 D.H.Sc., M.Sc., B.Sc., MT (AAB)



Definitions and Abbreviations used in this report: *Total CBD = CBD + (CBD-A * 0.877), *Total THC = THCA-A * 0.877 + Delta 9 THC, *CBG Total = (CBGA * 0.877) + CBG, *CBN Total = (CBNA * 0.877) + CBN, *Other Cannabinoids Total = CBC + CBDV + THCV + THCV-A, *Total Detected Cannabinoids = CBD Total + CBG Total + CBN Total + THC Total + CBC + CBDV + THCV + THCV-A, *Analyte Details above show the Dry Weight Concentrations unless specified as 12% moisture concentration. (mg/ml) = Milligrams per Milliliter, LOQ = Limit of Quantitation, LOD = Limit of Detection, Dilution = Dilution Factor (ppb) = Parts per Billion, (%) = Percent, (cfu/g) = Colony Forming Unit per Gram (cfu/g) = Colony Forming Unit per Gram, LOD = Limit of Detection, (µg/g) = Microgram per Gram (ppm) = Parts per Million, (ppm) = (µg/g), (aw) = aw (area ratio) = Area Ratio, (mg/Kg) = Milligram per Kilogram, *Measurement of Uncertainty = +/- 5%



This report shall not be reproduced, without written approval, from ACS Laboratory. The results of this report relate only to the material or product analyzed. Test results are confidential unless explicitly waived otherwise. Accredited by a third-party accrediting body as a competent testing laboratory pursuant to ISO/IEC 17025 of the International Organization for Standardization.